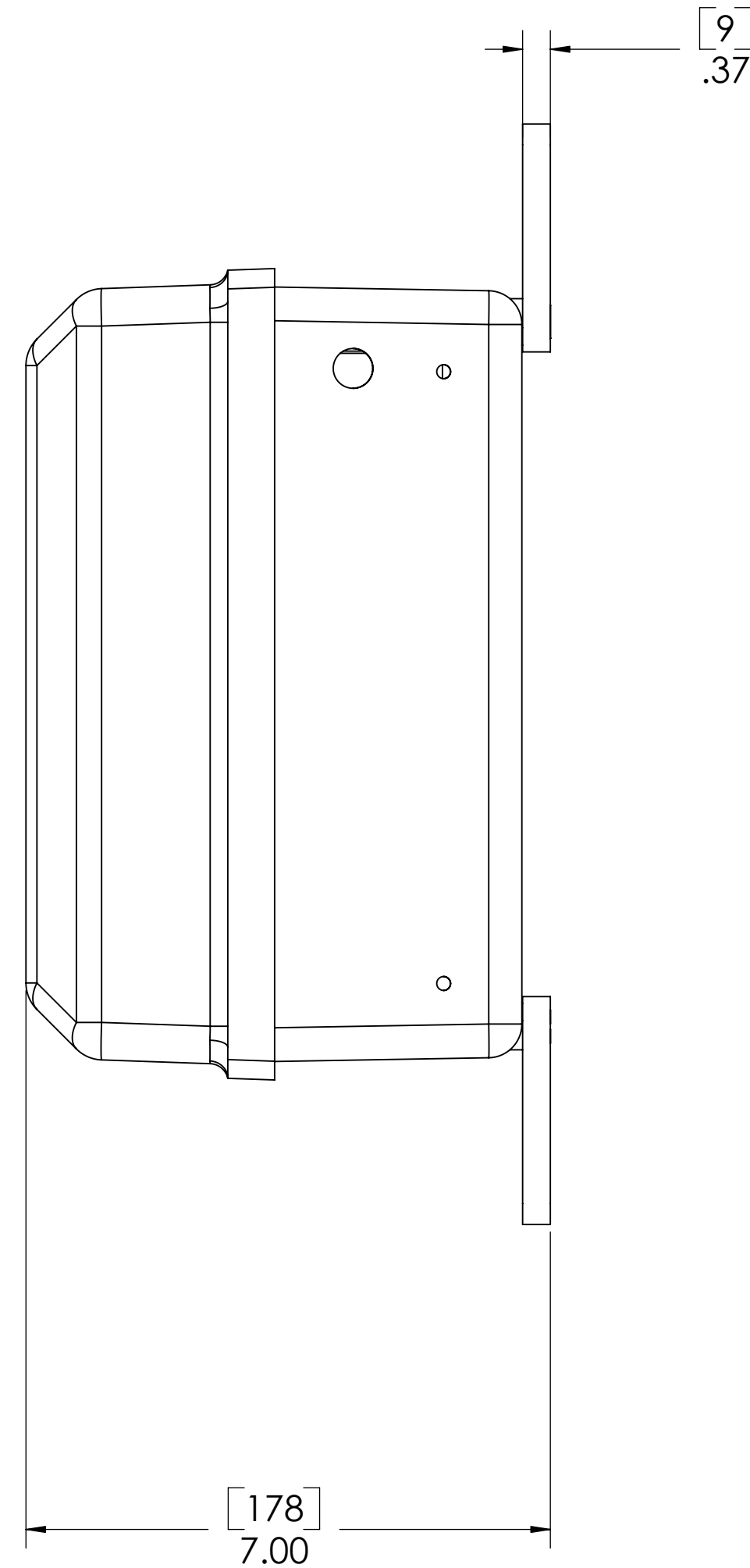
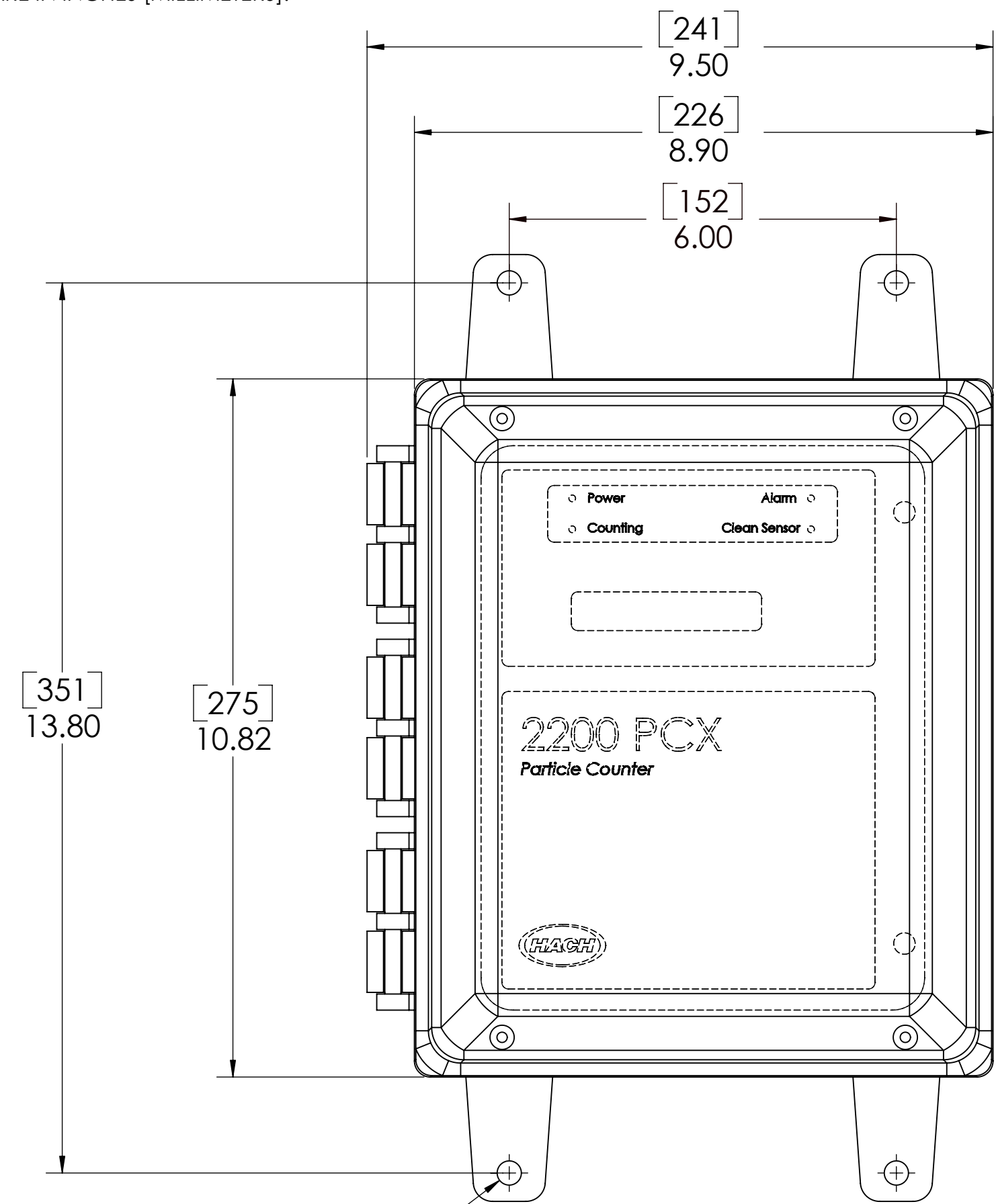
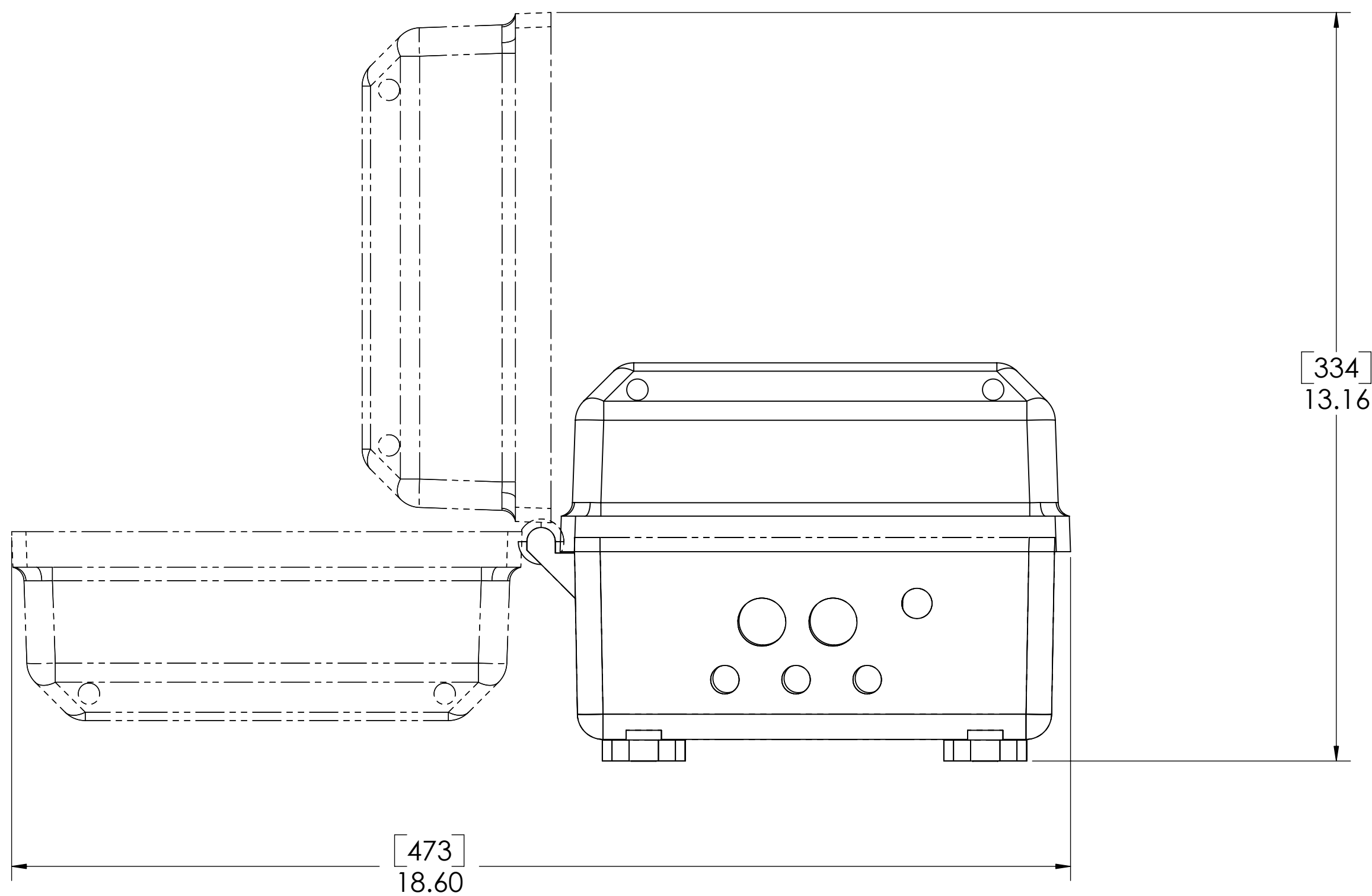


NOTES:
1. ALL DIMENSIONS ARE IN INCHES [MILLIMETERS].

REVISION		
REV	DESCRIPTION	APPROVED
A	PRODUCTION RELEASE	



9.53
Ø.375
4X



GENERAL INFORMATION:

SENSOR:

SMALLEST PARTICLES COUNTED: 2 MICRONS
LARGEST PARTICLES COUNTED: 750 MICRONS
DISTANCE FROM COMPUTER TO SENSOR: 4,000 FEET MAXIMUM (FOR ENTIRE RS 485 SIGNAL PATH)
POWER: 115 VAC (±10%); OPTIONAL 220 VAC (±10%); 50/60 Hz

ENCLOSURE: NEMA 4X

INDICATORS: POWER, COUNTING DISPLAY, CLEANSENSOR, AND ALARM

FLOW RATE: 100 mL/MINUTE, NOMINAL

MAX. PRESSURE:

65 psig, NOT MORE THAN 1 MINUTE DURATION; 55 psig CONTINUOUS

OPERATING TEMPERATURE RANGE: 0-50° C (32-122°F)

FLUID CONNECTIONS:

INLET: QUICK DISCONNECT. CONNECTS TO 1/4-INCH O.D TUBING

OUTLET: QUICK DISCONNECT. CONNECTS TO 1/4-INCH O.D TUBING

ACCESSORIES/OPTIONS:

FLOW CONTROL: BOTH ACTIVE AND PASSIVE/ MANUAL CONTROL DEVICES AVAILABLE

COMPUTER: IBM COMPATIBLE WITH THE FOLLOWING MINIMUM SPECIFICATIONS: PENTIUM 166 MHZ WITH 32 MB OF RAM AND 2GB HARD DRIVE. SVGA COLOR GRAPHICS, 800 X 600 VIDEO RESOLUTION, WINDOWS 95, 98 OR NT 4.0 OR HIGHER.

VISTA SOFTWARE: FOR MONITORING FILTER PERFORMANCE, GENERATING REPORTS

WIRING /CABLING:

WALL PLUG: 120 VAC

NEMA- ENCLOSED POWER SUPPLY: OPTIONAL

ANALOG INPUT/OUTPUT CARD:

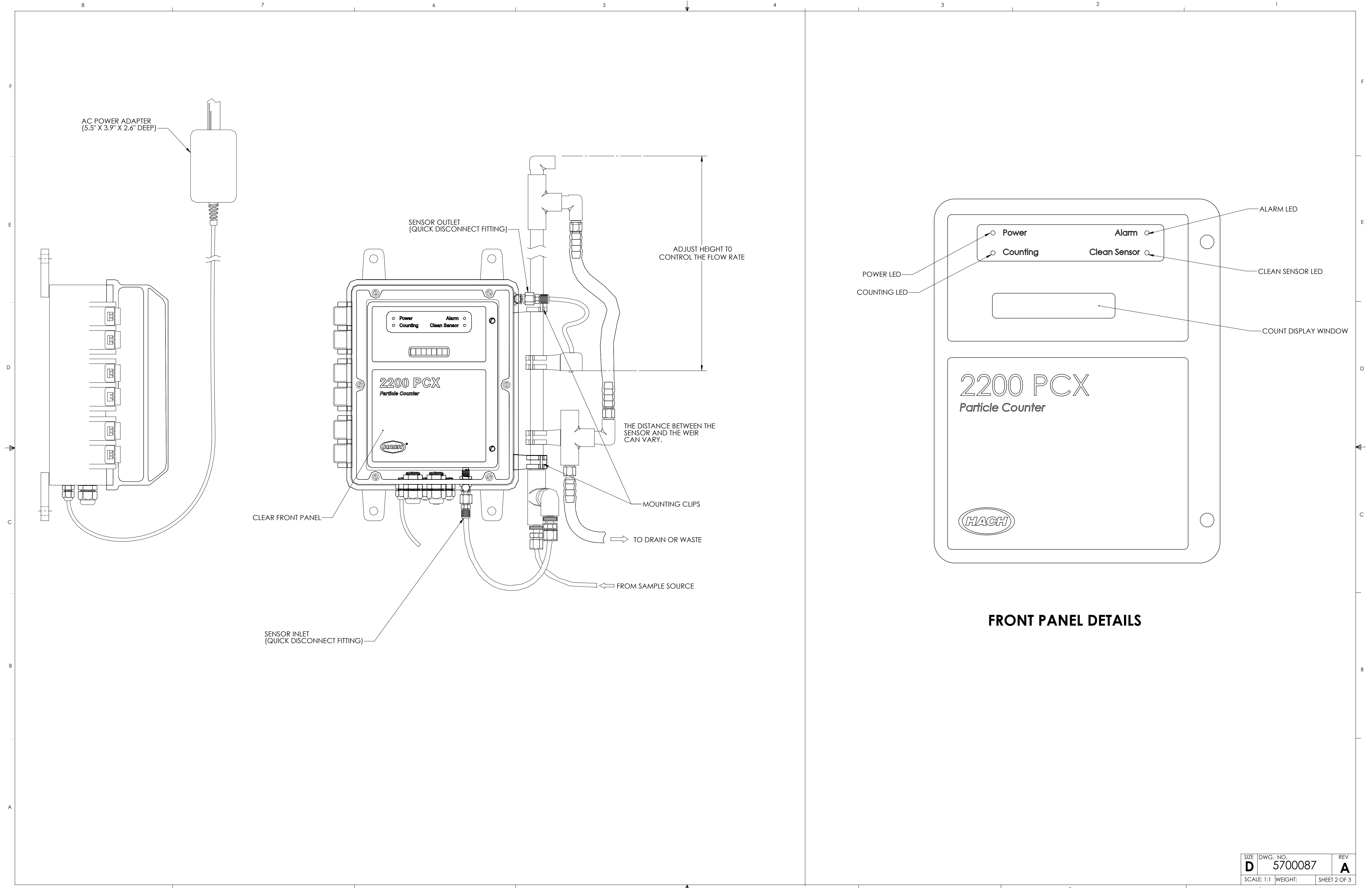
INPUT: ACCEPTS INPUT SIGNAL FROM EXTERNAL DEVICES:

OUTPUT: PROVIDES AN ANALOG OUTPUT LEVEL PROPORTIONAL TO TOTAL NUMBER OF PARTICLES COUNTED(RAW COUNT); INCLUDES INSTALLATION MANUAL

JUNCTION BOX: FOR PERMANENT INSTALLATION AT TEST SITE LOCATIONS SO THAT A SENSOR CAN BE EASILY CONNECTED AND REMOVED WITHOUT INTERRUPTING RS 485 NETWORK.

INSTRUMENT DIMENSIONS

NOTICE:HACH COMPANY CLAIMS PROPRIETARY RIGHTS IN THE INFORMATION DISCLOSED ON THIS DRAWING. IT IS ISSUED IN CONFIDENCE FOR ENGINEERING INFORMATION ONLY AND MAY NOT, IN WHOLE OR IN PART, BE USED TO MANUFACTURE ANYTHING, WHETHER OR NOT SHOWN HEREON, REPRODUCED OR DISCLOSED TO ANYONE WITHOUT DIRECT PERMISSION FROM HACH COMPANY.			
MATERIAL	UNLESS OTHERWISE SPECIFIED: DIMENSIONS ARE IN INCHES TOLERANCES: X = ± XX = ± XXX = ± ANGLES = ±	NAME TCS TCS	DATE 19/12/04 19/12/04
THIRD ANGLE PROJECTION		HACH COMPANY 5600 LINDBERGH DR LOVELAND, CO. 80539	
INTERPRET GEOMETRIC TOLERANCING PER: ANSI Y14.5M 1994		TITLE: TRANSMITTAL, 2200 PCX PARTICLE CNTR	
DO NOT SCALE THIS SHEET		SIZE D	DWG. NO. 5700087
		SCALE: 1:2	REV A
		WEIGHT:	SHEET 1 OF 3



AC POWER ADAPTER
(5.5" X 3.9" X 2.6" DEEP)

SENSOR OUTLET
(QUICK DISCONNECT FITTING)

ADJUST HEIGHT TO
CONTROL THE FLOW RATE

THE DISTANCE BETWEEN THE
SENSOR AND THE WEIR
CAN VARY.

MOUNTING CLIPS

TO DRAIN OR WASTE

FROM SAMPLE SOURCE

CLEAR FRONT PANEL

SENSOR INLET
(QUICK DISCONNECT FITTING)

ALARM LED

Power

Alarm

Counting

Clean Sensor

POWER LED

COUNTING LED

CLEAN SENSOR LED

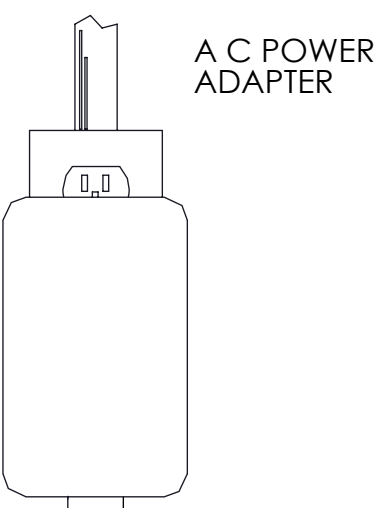
COUNT DISPLAY WINDOW

2200 PCX
Particle Counter

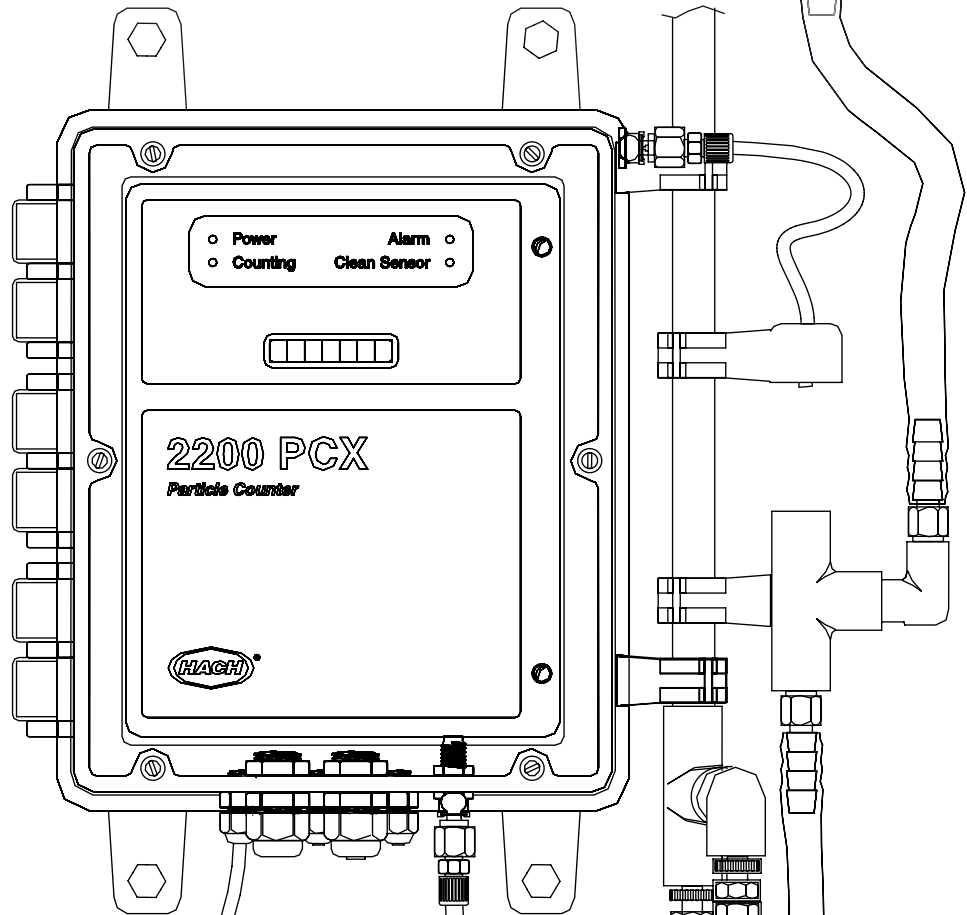


FRONT PANEL DETAILS

PLUMBING CONNECTION DETAILS



A C POWER ADAPTER



2200 PCX Particle Counter

MAXIMUM HEAD LOSS PLUS 4 FEET

FILTER

SAMPLE INLET TUBING SHOULD NOT EXTEND BEYOND 10 FEET.

PLUMBING TAP WITH SHUT OFF

DRAIN